

# Tooling Solutions for Scarfing Operations



PalbitUSA.com

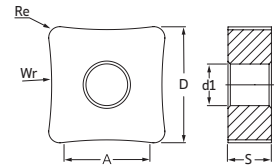



NEW  
SCARFING

SINCE 1916

# SCARFING = SNMA


## Negative Inserts



Inserts	(1) Geometry Code	(2) Grade Code		P	M	Dimensions (mm)						Tube Diameter (mm)
				CVD	CVD	D	S	A	Re	d1	Wr	
				L8	L8							
PH5125	PH5125	ISO Reference	ANSI Reference									
	1123927	SNMA 150612-R020	SNMA 543-R020	○	○	15.88	6.35	10	1.2	6.35	20	23-29
	1123928	SNMA 150612-R022	SNMA 543-R022	○	○	15.88	6.35	10	1.2	6.35	22	25-32
	1123929	SNMA 150612-R025	SNMA 543-R025	○	○	15.88	6.35	10	1.2	6.35	25	29-36
	1123930	SNMA 150612-R027	SNMA 543-R027	○	○	15.88	6.35	10	1.2	6.35	27	31-39
	1123931	SNMA 150612-R030	SNMA 543-R030	○	○	15.88	6.35	10	1.2	6.35	30	35-44
	1123932	SNMA 150612-R035	SNMA 543-R035	○	○	15.88	6.35	10	1.2	6.35	35	40-51
	1123933	SNMA 150612-R040	SNMA 543-R040	○	○	15.88	6.35	10	1.2	6.35	40	46-58
	1123934	SNMA 150612-R050	SNMA 543-R050	○	○	15.88	6.35	10	1.2	6.35	50	58-73
	1123935	SNMA 150612-R060	SNMA 543-R060	○	○	15.88	6.35	10	1.2	6.35	60	69-87
	1123936	SNMA 150612-R070	SNMA 543-R070	○	○	15.88	6.35	10	1.2	6.35	70	80-95
 SNMA Roughing	1123937	SNMA 190612-R030	SNMA 643-R030	○	○	19.05	6.35	12	1.2	7.94	30	35-44
	1123938	SNMA 190612-R040	SNMA 643-R040	○	○	19.05	6.35	12	1.2	7.94	40	46-58
	1123939	SNMA 190612-R050	SNMA 643-R050	○	○	19.05	6.35	12	1.2	7.94	50	58-73
	1123940	SNMA 190612-R060	SNMA 643-R060	○	○	19.05	6.35	12	1.2	7.94	60	69-87
	1123941	SNMA 190612-R070	SNMA 643-R070	○	○	19.05	6.35	12	1.2	7.94	70	80-95
	1123942	SNMA 190612-R080	SNMA 643-R080	○	○	19.05	6.35	12	1.2	7.94	80	92-116
	1123943	SNMA 190612-R090	SNMA 643-R090	○	○	19.05	6.35	12	1.2	7.94	90	104-131
	1123944	SNMA 250924-R000	SNMA 866-R000	○	○	25.40	9.52	17	2.4	9.12	0	-
	1123945	SNMA 250924-R060	SNMA 866-R060	○	○	25.40	9.52	17	2.4	9.12	60	69-87
1123946	SNMA 250924-R070	SNMA 866-R070	○	○	25.40	9.52	17	2.4	9.12	70	80-95	
1123947	SNMA 250924-R080	SNMA 866-R080	○	○	25.40	9.52	17	2.4	9.12	80	92-116	
1123948	SNMA 250924-R100	SNMA 866-R100	○	○	25.40	9.52	17	2.4	9.12	100	115-145	
1123949	SNMA 250924-R150	SNMA 866-R150	○	○	25.40	9.52	17	2.4	9.12	150	165-215	
1123950	SNMA 250924-R200	SNMA 866-R200	○	○	25.40	9.52	17	2.4	9.12	200	230-290	

 First choice

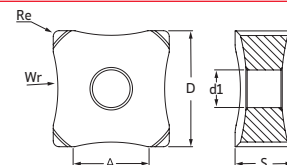
 Stock Items

 Available Upon Request

Insert Order Code: <sup>(1)</sup> Geometry code + <sup>(2)</sup> Grade code

# SCARFING = SNMX

## Negative Inserts



Inserts	(1) Geometry Code	(2) Grade Code		P	M	Dimensions (mm)						Tube Diameter (mm)
				CVD	CVD	D	S	A	Re	d1	Wr	
				L8	L8							
PH5125	PH5125											
1123879	SNMX 150708-R000	SNMX 552-R000	○	○	15.88	7.94	10	0.8	5.16	0	-	
1123880	SNMX 150708-R007	SNMX 552-R007	○	○	15.88	7.94	10	0.8	5.16	7	08-10	
1123881	SNMX 150708-R009	SNMX 552-R009	○	○	15.88	7.94	10	0.8	5.16	9	10-13	
1123882	SNMX 150708-R011	SNMX 552-R011	○	○	15.88	7.94	10	0.8	5.16	11	13-16	
1123883	SNMX 150708-R013	SNMX 552-R013	○	○	15.88	7.94	10	0.8	5.16	13	15-19	
1123884	SNMX 150708-R015	SNMX 552-R015	○	○	15.88	7.94	10	0.8	5.16	15	17-22	
1123885	SNMX 150708-R018	SNMX 552-R018	○	○	15.88	7.94	10	0.8	5.16	18	21-26	
1123886	SNMX 150708-R020	SNMX 552-R020	⊗	⊗	15.88	7.94	10	0.8	5.16	20	23-29	
1123887	SNMX 150708-R022	SNMX 552-R022	○	○	15.88	7.94	10	0.8	5.16	22	25-32	
1123888	SNMX 150708-R025	SNMX 552-R025	○	○	15.88	7.94	10	0.8	5.16	25	29-36	
1123889	SNMX 150708-R027	SNMX 552-R027	○	○	15.88	7.94	10	0.8	5.16	27	31-39	
1123890	SNMX 150708-R030	SNMX 552-R030	○	○	15.88	7.94	10	0.8	5.16	30	35-44	
1123891	SNMX 150708-R035	SNMX 552-R035	○	○	15.88	7.94	10	0.8	5.16	35	40-51	
1123892	SNMX 150708-R040	SNMX 552-R040	○	○	15.88	7.94	10	0.8	5.16	40	46-58	
1123893	SNMX 150708-R045	SNMX 552-R045	○	○	15.88	7.94	10	0.8	5.16	45	52-65	
1123894	SNMX 150708-R050	SNMX 552-R050	○	○	15.88	7.94	10	0.8	5.16	50	58-73	
1123895	SNMX 150708-R060	SNMX 552-R060	○	○	15.88	7.94	10	0.8	5.16	60	69-87	
1124461	SNMX 150708-R070	SNMX 552-R070	○	○	15.88	7.94	10	0.8	5.16	70	80-95	
1124462	SNMX 150708-R075	SNMX 552-R075	○	○	15.88	7.94	10	0.8	5.16	75	86-102	
1123896	SNMX 190912-R000	SNMX 663-R000	○	○	19.05	9.12	12	1.2	6.35	0	-	
1122012	SNMX 190912-R020	SNMX 663-R020	○	○	19.05	9.12	12	1.2	6.35	20	23-29	
1123897	SNMX 190912-R030	SNMX 663-R030	○	○	19.05	9.12	12	1.2	6.35	30	35-44	
1123898	SNMX 190912-R040	SNMX 663-R040	○	○	19.05	9.12	12	1.2	6.35	40	46-58	
1123899	SNMX 190912-R050	SNMX 663-R050	○	○	19.05	9.12	12	1.2	6.35	50	58-73	
1122013	SNMX 190912-R060	SNMX 663-R060	○	○	19.05	9.12	12	1.2	6.35	60	69-87	
1123900	SNMX 190912-R070	SNMX 663-R070	○	○	19.05	9.12	12	1.2	6.35	70	80-95	
1123901	SNMX 190912-R080	SNMX 663-R080	○	○	19.05	9.12	12	1.2	6.35	80	92-116	
1123902	SNMX 190912-R090	SNMX 663-R090	○	○	19.05	9.12	12	1.2	6.35	90	104-131	
1123903	SNMX 190912-R100	SNMX 663-R100	○	○	19.05	9.12	12	1.2	6.35	100	115-145	
1123864	SNMX 251216-R000	SNMX 884-R000	⊗	⊗	25.40	12.70	17	1.6	9.12	0	-	
1123904	SNMX 251216-R050	SNMX 884-R050	⊗	⊗	25.40	12.70	17	1.6	9.12	50	58-73	
1122015	SNMX 251216-R080	SNMX 884-R080	⊗	⊗	25.40	12.70	17	1.6	9.12	80	92-116	
1123905	SNMX 251216-R090	SNMX 884-R090	⊗	⊗	25.40	12.70	17	1.6	9.12	90	104-131	
1123906	SNMX 251216-R100	SNMX 884-R100	⊗	⊗	25.40	12.70	17	1.6	9.12	100	115-145	
1122016	SNMX 251216-R120	SNMX 884-R120	⊗	⊗	25.40	12.70	17	1.6	9.12	120	138-174	
1123907	SNMX 251216-R150	SNMX 884-R150	⊗	⊗	25.40	12.70	17	1.6	9.12	150	165-215	
1123908	SNMX 251216-R200	SNMX 884-R200	⊗	⊗	25.40	12.70	17	1.6	9.12	200	230-290	
1123909	SNMX 251216-R250	SNMX 884-R250	⊗	⊗	25.40	12.70	17	1.6	9.12	250	275-315	



Medium to Finishing

⊗ First choice

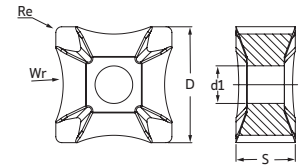
⊗ Stock Items

○ Available Upon Request

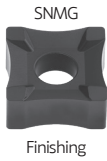
Insert Order Code: (1) Geometry code + (2) Grade code

# SCARFING = SNMG

## Negative Inserts



Insert	(1) Geometry Code	(2) Grade Code		P	M	Dimensions (mm)						Tube Diameter (mm)
				CVD	CVD	D	S	A	Re	d1	Wr	
				L7	L8							
PH5115	PH5125	ISO Reference	ANSI Reference									
1123951	SNMG 15M808-R000	SNMG 55.12-R000	○	○	15.88	8.15	10	0.8	5.16	0	-	
1123952	SNMG 15M808-R007	SNMG 55.12-R007	○	○	15.88	8.15	10	0.8	5.16	7	08-10	
1123953	SNMG 15M808-R009	SNMG 55.12-R009	○	○	15.88	8.15	10	0.8	5.16	9	10-13	
1123954	SNMG 15M808-R011	SNMG 55.12-R011	⊗	○	15.88	8.15	10	0.8	5.16	11	13-16	
1123955	SNMG 15M808-R013	SNMG 55.12-R013	⊗	○	15.88	8.15	10	0.8	5.16	13	15-19	
1123956	SNMG 15M808-R015	SNMG 55.12-R015	⊗	○	15.88	8.15	10	0.8	5.16	15	17-22	
1123957	SNMG 15M808-R018	SNMG 55.12-R018	⊗	○	15.88	8.15	10	0.8	5.16	18	21-26	
1123958	SNMG 15M808-R020	SNMG 55.12-R020	⊗	○	15.88	8.15	10	0.8	5.16	20	23-29	
1123959	SNMG 15M808-R022	SNMG 55.12-R022	○	○	15.88	8.15	10	0.8	5.16	22	25-32	
1123960	SNMG 15M808-R025	SNMG 55.12-R025	⊗	○	15.88	8.15	10	0.8	5.16	25	29-36	
1123961	SNMG 15M808-R027	SNMG 55.12-R027	⊗	○	15.88	8.15	10	0.8	5.16	27	31-39	
1123962	SNMG 15M808-R030	SNMG 55.12-R030	⊗	○	15.88	8.15	10	0.8	5.16	30	35-44	
1123963	SNMG 15M808-R035	SNMG 55.12-R035	⊗	○	15.88	8.15	10	0.8	5.16	35	40-51	
1123964	SNMG 15M808-R040	SNMG 55.12-R040	⊗	○	15.88	8.15	10	0.8	5.16	40	46-58	
1123965	SNMG 15M808-R045	SNMG 55.12-R045	⊗	○	15.88	8.15	10	0.8	5.16	45	52-65	
1123966	SNMG 15M808-R050	SNMG 55.12-R050	○	○	15.88	8.15	10	0.8	5.16	50	58-73	
1123967	SNMG 15M808-R060	SNMG 55.12-R060	⊗	○	15.88	8.15	10	0.8	5.16	60	69-87	
1123968	SNMG 19M808-R000	SNMG 65.13-R000	○	○	19.05	8.15	12	0.8	8.00	20	-	
1123969	SNMG 19M808-R010	SNMG 65.13-R010	○	○	19.05	8.15	12	0.8	8.00	10	12-15	
1123970	SNMG 19M808-R020	SNMG 65.13-R020	⊗	○	19.05	8.15	12	0.8	8.00	20	23-29	
1123971	SNMG 19M808-R030	SNMG 65.13-R030	⊗	○	19.05	8.15	12	0.8	8.00	30	35-44	
1123972	SNMG 19M808-R040	SNMG 65.13-R040	○	○	19.05	8.15	12	0.8	8.00	40	46-58	
1123973	SNMG 19M808-R050	SNMG 65.13-R050	○	○	19.05	8.15	12	0.8	8.00	50	58-73	
1123974	SNMG 19M808-R060	SNMG 65.13-R060	○	○	19.05	8.15	12	0.8	8.00	60	69-87	
1123975	SNMG 19M808-R070	SNMG 65.13-R070	○	○	19.05	8.15	12	0.8	8.00	70	80-95	
1123976	SNMG 19M808-R080	SNMG 65.13-R080	○	○	19.05	8.15	12	0.8	8.00	80	92-116	
1123977	SNMG 19M808-R090	SNMG 65.13-R090	○	○	19.05	8.15	12	0.8	8.00	90	104-131	
1123978	SNMG 19M808-R100	SNMG 65.13-R100	○	○	19.05	8.15	12	0.8	8.00	100	115-145	



⊗ First choice

⊗ Stock Items

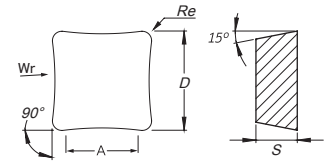
○ Available Upon Request

Insert Order Code: <sup>(1)</sup>Geometry code + <sup>(2)</sup>Grade code

# SCARFING = SDMX

## Positive Inserts

RELIEF ANGLE 15°



Inserts	(1) Geometry Code	ISO Reference	ANSI Reference	P	M	Dimensions (mm)						Tube Diameter (mm)
				CVD	CVD							
				9B	9B							
(2) Grade Code				PHY125	PHY125	D	S	A	Re	d1	Wr	
SDMX  Medium to Finishing	11247529B	SDMX 250616-R000	SDMX 250616-R000	<input checked="" type="radio"/>	<input type="radio"/>	25.40	6.35	20	1.60	-	0	-
	11247539B	SDMX 250616-R180	SDMX 250616-R180	<input checked="" type="radio"/>	<input type="radio"/>	25.40	6.35	20	1.60	-	180	210-270
	11247549B	SDMX 250616-R300	SDMX 250616-R300	<input checked="" type="radio"/>	<input type="radio"/>	25.40	6.35	20	1.60	-	300	340-410
	11247559B	SDMX 250616-R400	SDMX 250616-R400	<input checked="" type="radio"/>	<input type="radio"/>	25.40	6.35	20	1.60	-	400	440-520
	11247569B	SDMX 250616-R550	SDMX 250616-R550	<input checked="" type="radio"/>	<input type="radio"/>	25.40	6.35	20	1.60	-	550	600-700
	11247579B	SDMX 350900-R000	SDMX 350900-R000	<input checked="" type="radio"/>	<input type="radio"/>	35.00	9.60	30	-	-	0	-
	11247589B	SDMX 350900-R105	SDMX 350900-R105	<input checked="" type="radio"/>	<input type="radio"/>	35.00	9.60	30	-	-	105	115-145
	11247599B	SDMX 350900-R145	SDMX 350900-R145	<input checked="" type="radio"/>	<input type="radio"/>	35.00	9.60	30	-	-	145	160-210
	11247609B	SDMX 350900-R300	SDMX 350900-R300	<input checked="" type="radio"/>	<input type="radio"/>	35.00	9.60	30	-	-	300	340-410
	11247619B	SDMX 350900-R400	SDMX 350900-R400	<input checked="" type="radio"/>	<input type="radio"/>	35.00	9.60	30	-	-	400	440-520
11247629B	SDMX 350900-R550	SDMX 350900-R550	<input checked="" type="radio"/>	<input type="radio"/>	35.00	9.60	30	-	-	550	600-700	

 First choice

 Stock Items

Available Upon Request

Insert Order Code: <sup>(1)</sup> Geometry code + <sup>(2)</sup> Grade code



PalbitUSA.com



SCARFING

NEW

U.S. Partner:



Precision Products

15 Merrigan Way | South Deerfield, MA 01373

413-350-5200 | PilotPrecision.com

ISO 9001:2015



SINCE 1916

PALBITUSA.COM